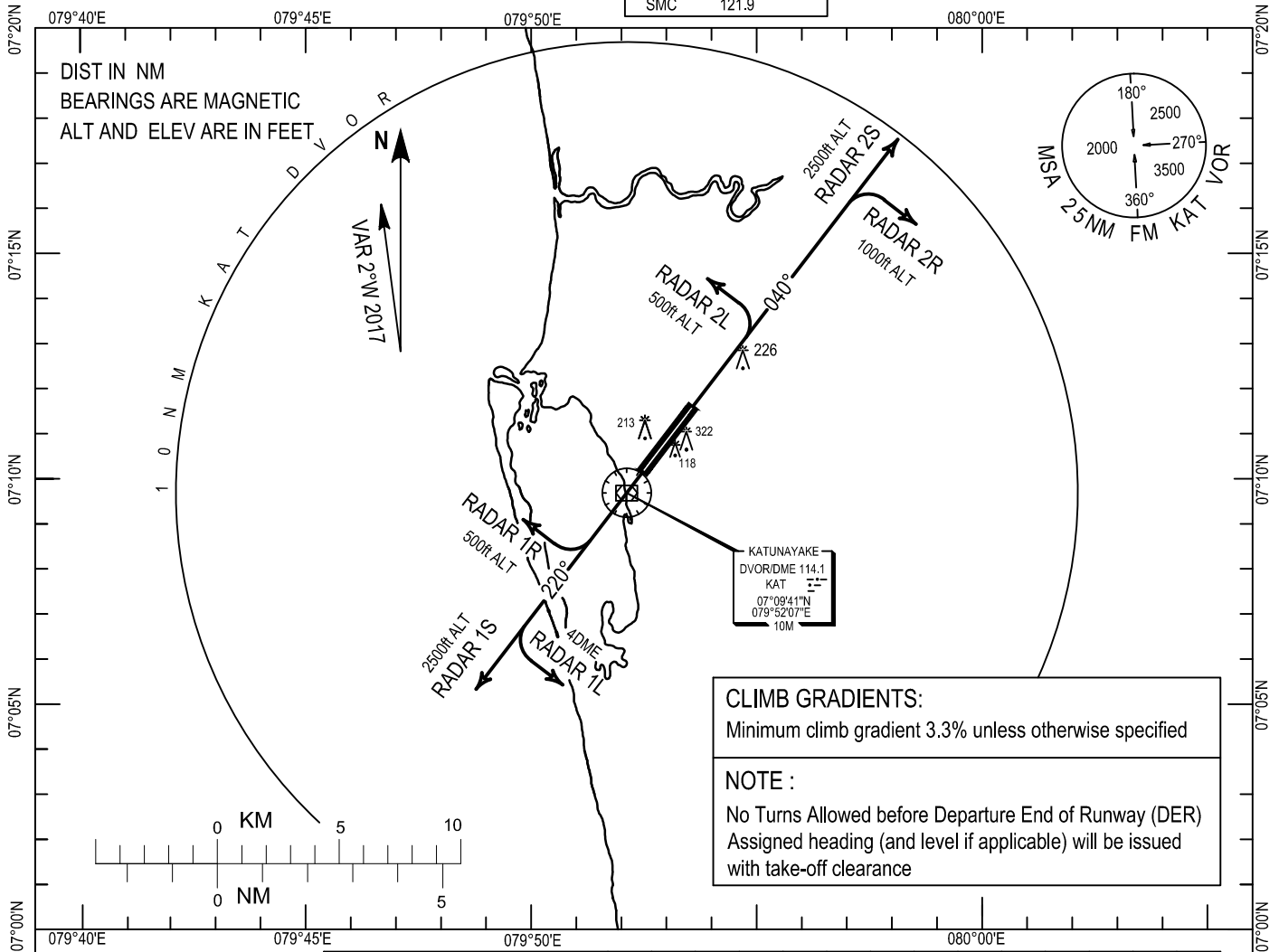


STANDARD INSTRUMENT  
DEPARTURE (SID)-ICAO

TRANSITION LEVEL FL 130  
TRANSITION ALTITUDE 11000ft

ATIS	127.2
Colombo Director	132.4 120.9
Colombo Tower	118.7 123.8
SMC	121.9

KATUNAYAKE/BANDARANAIKE INTL.  
COLOMBO ( VCBI )  
RADAR DEPARTURE 2L,2R,2S RWY 04  
RADAR DEPARTURE 1L,1R,1S RWY 22



**CLIMB GRADIENTS:**  
Minimum climb gradient 3.3% unless otherwise specified

**NOTE :**  
No Turns Allowed before Departure End of Runway (DER)  
Assigned heading (and level if applicable) will be issued with take-off clearance

Ground Speed (kts)	120	130	140	150	160	170	180	190	200	220	240	260	280	300
Rate of Climb Gradient (FT/MIN)	401	434	468	502	535	569	602	635	669	736	803	869	936	1003

**Standard Radar Departure RWY22**

**RADAR 1L DEPARTURE**

Climb Straight-Ahead  
When Airborne Contact Colombo DIRECTOR on 132.4MHz .  
Turn Left before 4 DME KAT DVOR  
Track on to Course

**RADAR 1R DEPARTURE**

Climb Straight Ahead  
When Airborne Contact Colombo DIRECTOR on 132.4MHz.  
Turn Right at 500 feet  
Track on to Course

**RADAR 1S DEPARTURE**

Climb Straight-Ahead  
When Airborne Contact Colombo DIRECTOR on 132.4MHz.  
Climb and Maintain 2500 feet

**Standard Radar Departure RWY04**

**RADAR 2L DEPARTURE**

Climb Straight-Ahead  
When Airborne Contact Colombo DIRECTOR on 132.4MHz .  
Turn Left at 500 feet  
Track on to Course

**RADAR 2R DEPARTURE**

Climb Straight-Ahead  
When Airborne Contact Colombo DIRECTOR on 132.4MHz .  
Turn Right at 1000 feet  
Track on to Course

**RADAR 2S DEPARTURE**

Climb Straight-Ahead  
When Airborne Contact Colombo DIRECTOR on 132.4MHz.  
Climb and Maintain 2500 feet

**COMMUNICATION FAILURE**

- Immediately Squawk 7600
- Maintain assigned heading-climb to MSA or at last assigned level (if higher)
- Maintain MSA or assigned level as appropriate for 2 minutes. Then climb to flight plan Level and intercept Flight Plan Track ( As amended by ATC if applicable)